

W04 – Career Kit: Textile Reference Guide (Part 2)

The purpose of this assignment was to identify typical household textiles by fiber content and weave. I selected textiles from the following household items: a sitting chair and ottoman; sofa and love seat; and microfiber sheets.

Sitting Chair and Ottoman – Upholstery

This is a standard wing-back, non-reclining sitting chair with matching ottoman from IKEA.

This is a *woven textile*.

The weave is a *twill weave* with the texture and hand of a *denim fabric*.

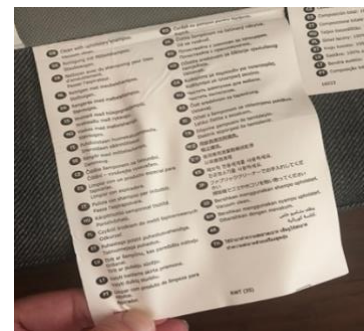
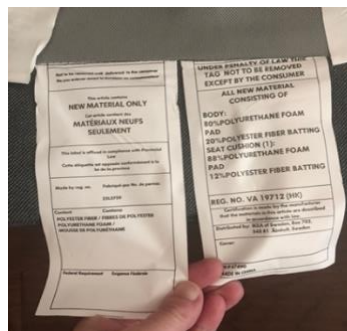
The color is medium grey.

It is made from *100% polyester fibers* based on the law labels attached to the chair.

Care instructions are clean with upholstery shampoo and vacuum clean. Typical for most furniture applications.

It is a *low maintenance* material and *resists dirt and skin oils*. This is typical of both twill and denim fabrics.

The material is *very durable*. It has held up nicely to everyday wear and tear even with constant use. A variety of shoes are frequently worn while using the ottoman.



Sofa and Love Seat – Upholstery

This is a standard three-person sofa and two-person love seat manufactured by Fusion Furniture and purchased at Nebraska Furniture Mart.

This a *woven textile*.

The weave is a *plain weave* constructed of multiple fibers of variable weight/thickness creating a *hopsack fabric* look and feel.

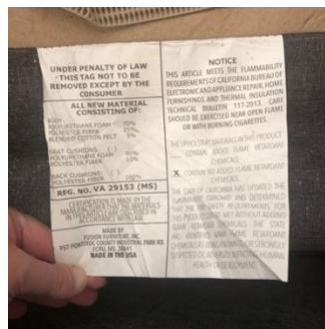
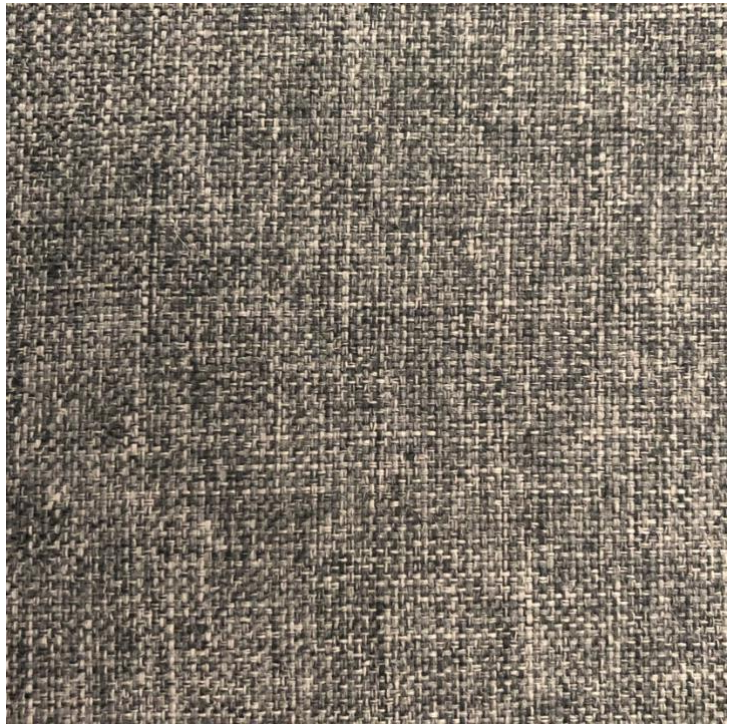
The color is medium grey with color variances throughout.

It is made from *100% polyester fibers*.

Care instructions are not included.

It is a *low maintenance* material and *resists dirt and skin oils*.

The material is *durable, stable, and resists snags*. It has held up nicely to everyday wear and tear even with constant use. It *frays at the seam* under extreme situations but does not fray continuously. A variety of shoes are frequently worn while sitting on the couch.



Microfiber Sheets – Bedding

This is a standard microfiber sheet set purchased from

This a *woven textile*.

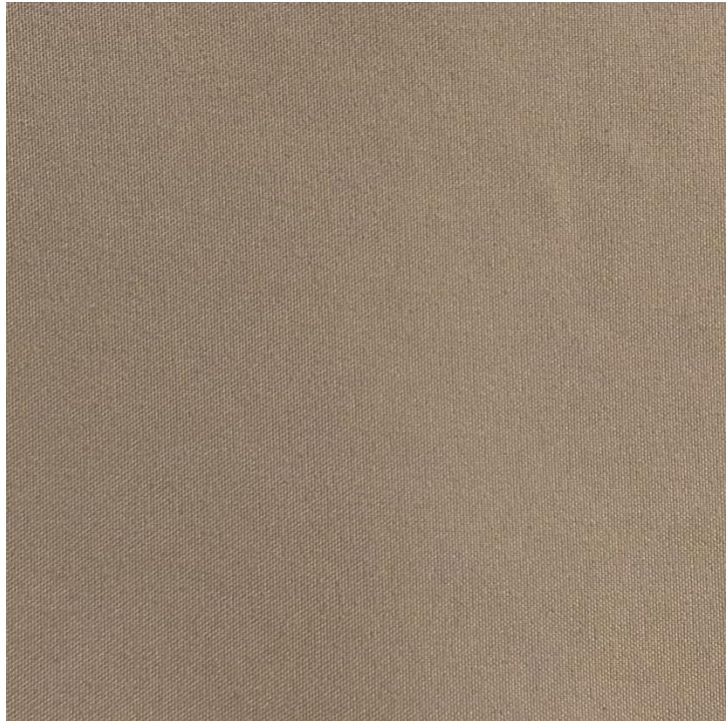
The weave is either a *sateen weave* or a *percale weave*. It is a *double brushed microfiber* material that feels luxurious to the touch.

The color is light grey.

It is made from *very fine 100% polyester fibers*.

The *thread count is 90 GSM* (grams per square meter).

It is a *low maintenance* fabric that *resists wrinkles, fading, and skin oils*.



While claims are made that they were stain resistant, we have found that they *do not resist stains or dyes from other clothing* such as jeans. The dyes do wash out, other stains have not.

Care instructions are machine wash cold to hot and tumble dry on low. No bleach or dry cleaning.

The material is *soft and supple* but tends to *pile* with continuous use.

Microfibers claim to be breathable; but we have found them to *trap heat*, making them hot to sleep with. They also tend to suffer from more *static cling* than cotton or cotton-poly sheets.